

Crayfish

(419 Collected, 27 Composites)



Clams

(3 Composites Collected)



Fish Sampling

(Total Number of Fish Collected: 1,451)

	Collected			Composites		
	Fillet	Wholebody	TOTAL	Fillet	Wholebody	TOTAL
Small Mouth Bass	24	66	90	5	14	19
Yellow Bullhead	9	9	18	---	---	---
Brown Bullhead	33	31	64	6	6	12
Carp	37	41	78	6	6	12
Juv Chinook	---	92	92	---	7	7
Black Crappie	23	25	48	4	4	8
Lamprey	---	3	3	---	---	---
Peamouth	---	30	30	---	4	4
Northern Pike Minnow	---	35	35	---	6	6
Sculpin	---	863	863	---	27	27
Largescale Sucker	37	91	128	---	6	6
Walleye	2	---	2	---	---	---

Small Mouth Bass

(90 Collected, 19 Composites)



Yellow Bullhead

(18 Collected)



Carp

(78 Collected, 12 Composites)



Juvenile Chinook

(92 Collected, 7 Composites)



Black Crappie

(48 Collected, 8 Composites)



Lamprey

(3 Collected)



Peamouth

(30 Collected, 4 Composites)



North Pike Minnow

(35 Collected, 6 Composites)



Sculpin

(863 Collected, 27 Composites)



Large Scale Sucker

(128 Collected, 6 Composites)



Chemicals Sampled

- 399 Analytes,

Including:

- Metals
- PAHs
- DDT
- TBTs
- PCBs

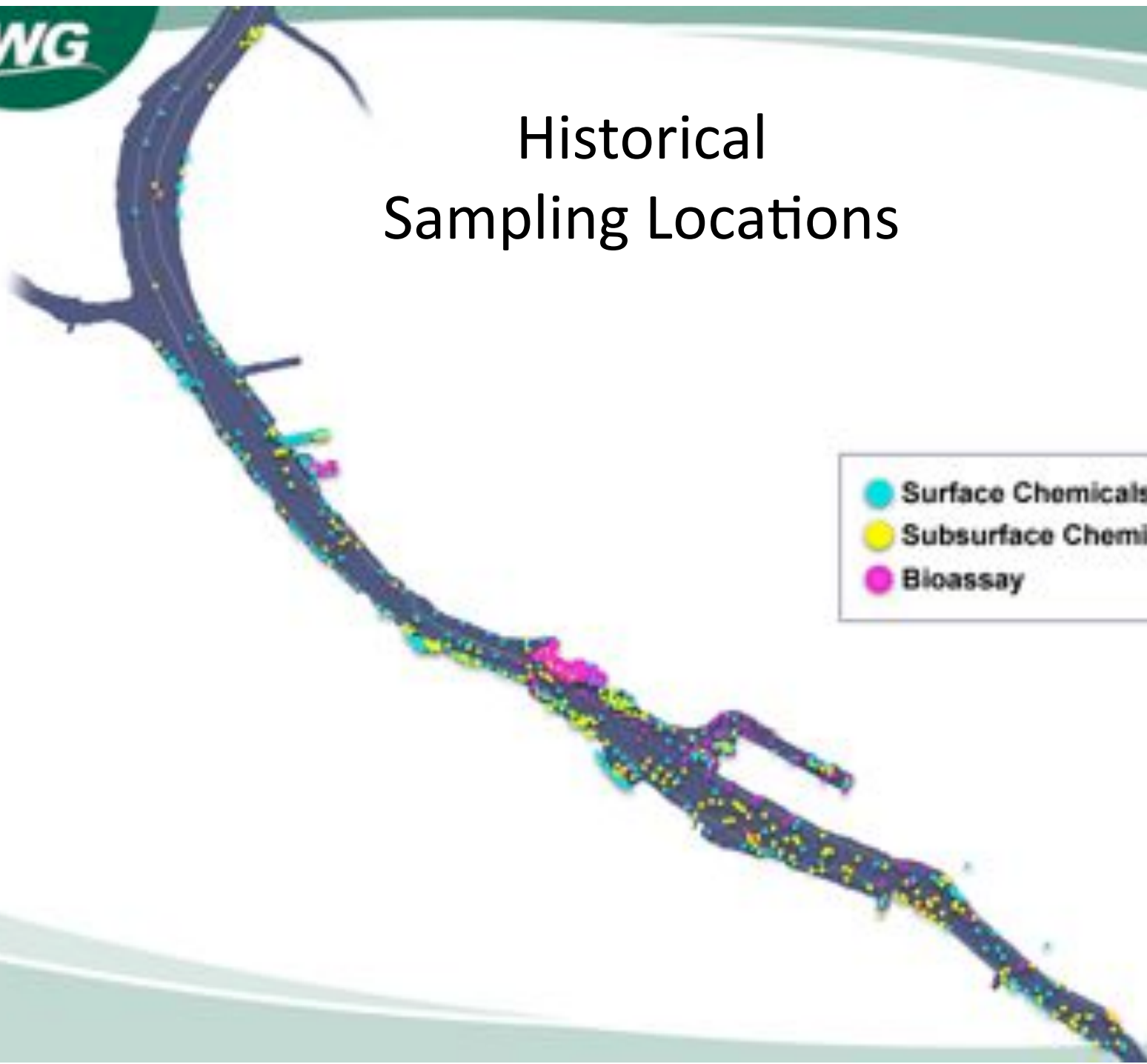
Historical Samples

(Category 1 Samples Not collected by the LWG)

- Bioassay (144)
- Surface Sediments (506)
- Subsurface Sediments (335)

Historical Sampling Locations

- Surface Chemicals
- Subsurface Chemicals
- Bioassay



All Sampling Locations

- STA
- SPI
- Surface Chemicals
- Subsurface Chemicals
- Bioassay
- Fish Collection
- Crayfish Collection
- Clam Grab
- Multiplates
- Benthos
- VanVeen Grab
- Sediment Grab
- Beach Sample
- Co-Loc Sediment

