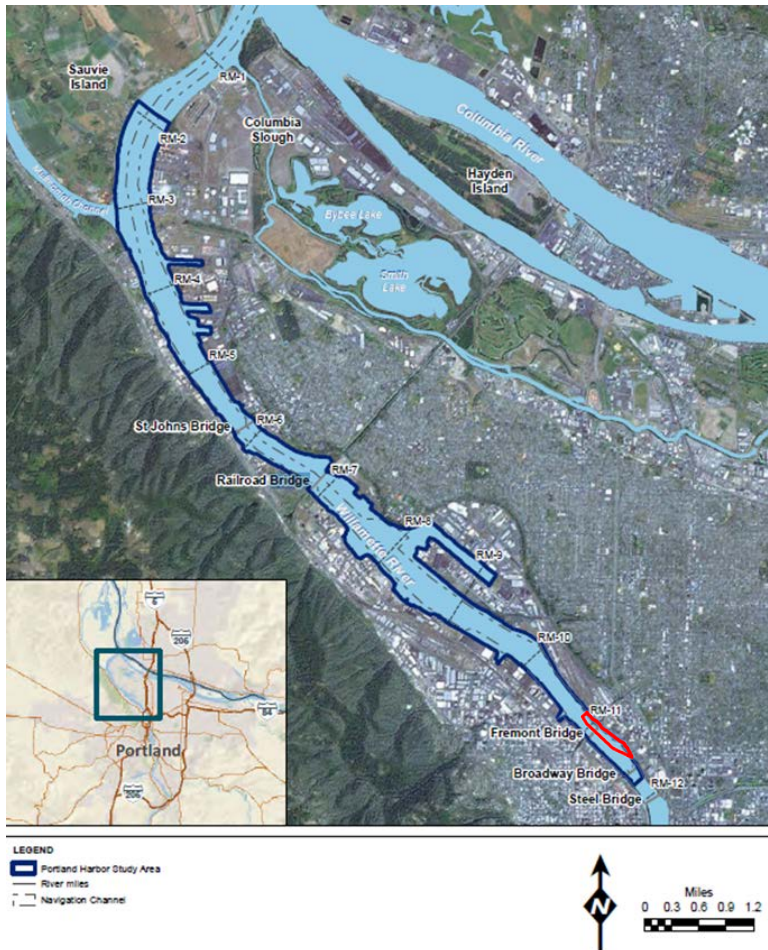
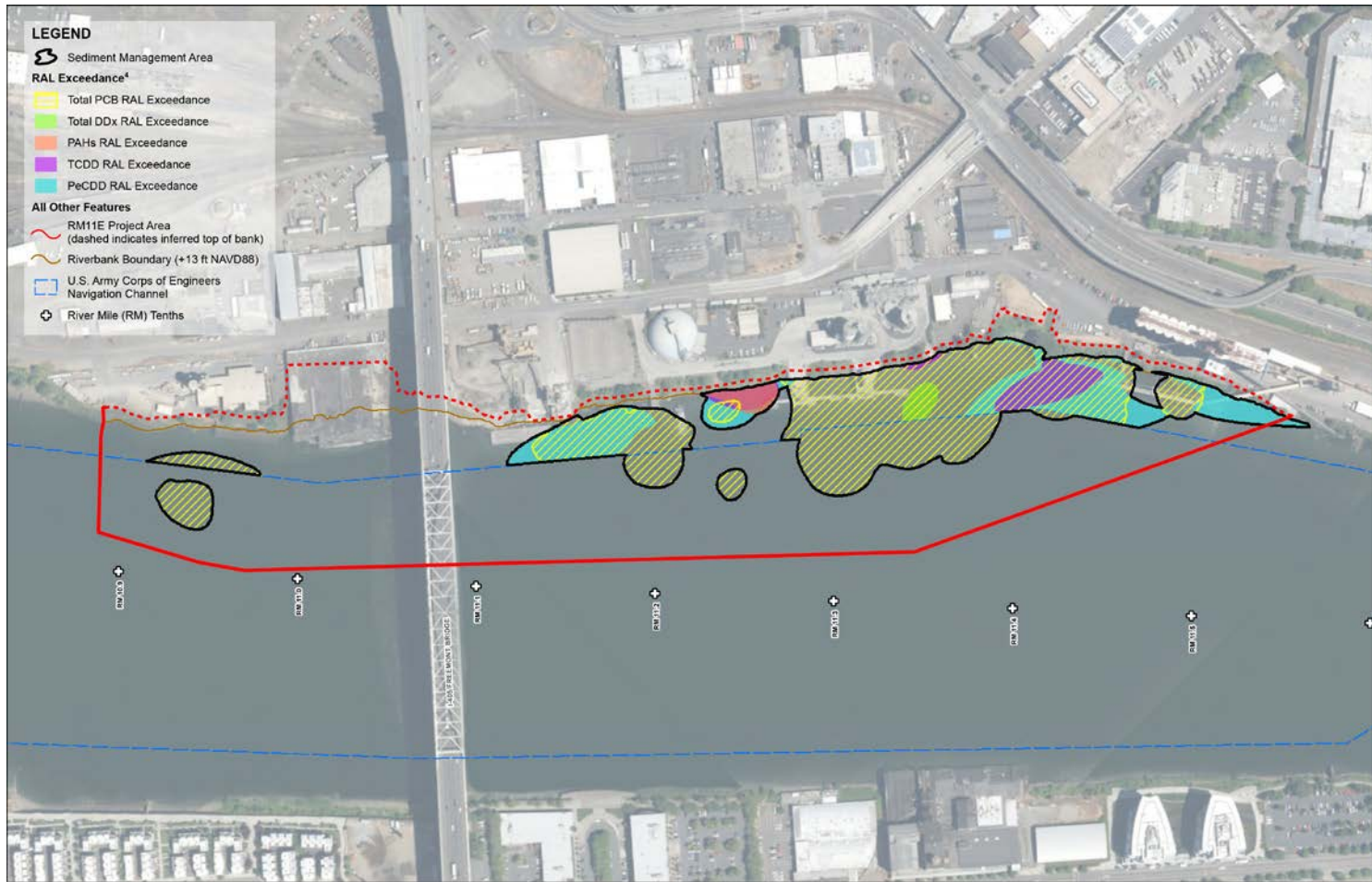


The Where, When and How of the River Mile 11E Project Area



- Identified by EPA as an Early Action Site
- Most upstream end of the Portland Harbor Superfund Site
- Project Area defined as RM10.8 through 11.6
- 6 Parties including City, Cargill, CBS, DIL Trust, Glacier, and PacifiCorp
- Entered into an agreement (*Administrative Settlement and Order on Consent or AOC*) with EPA in 2013
- Amended agreement in 2018 to include Remedial Design

Delineation of Sediment Management Areas (SMA) at RM11E



RM11E Project Area Deliverables

- Work Plan - Inventoried, reviewed, and summarized existing data **(COMPLETE)**
- Field Sampling and Data Report/Porewater Report- Collected surface sediment, bank soil, upland subsurface, groundwater, and porewater samples **(COMPLETE)**
- Recontamination Assessment – identify and evaluate potential upland and inwater sources of recontamination **(DRAFT COMPLETE)**
- Implementability Study - survey of underwater debris and structures, operations analysis, and infrastructure evaluation **(COMPLETE)**
- **Remedial Design - Underway**
 - Basis of Design Report due in 9 months
 - Full engineering design of cleanup, including necessary design studies, expected to take 2-3 years

Implementability Challenges

